

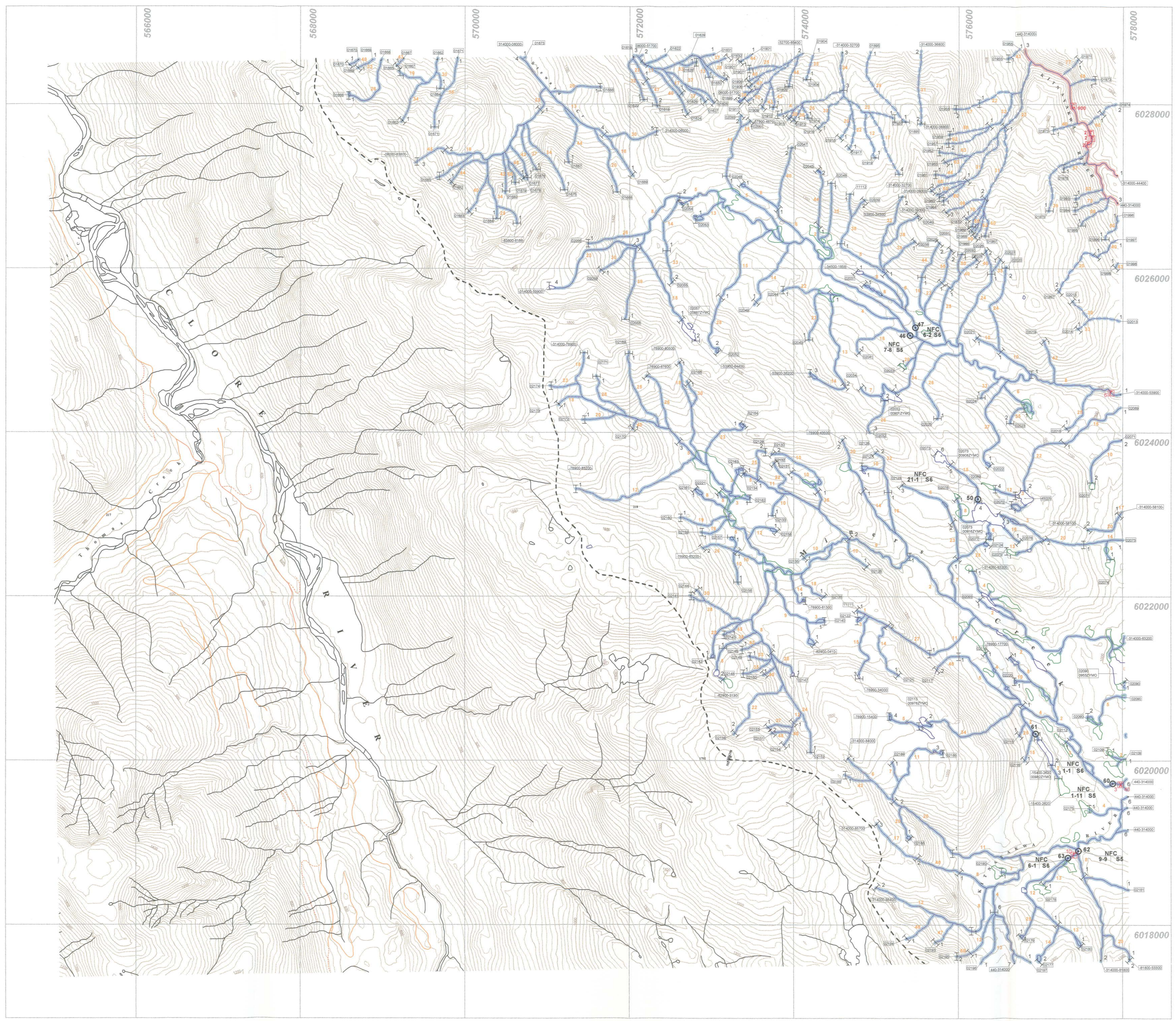
ECOCAT ID #491-6

**1:20,000 RECONNAISSANCE FISH AND FISH HABITAT INVENTORY**  
**ZYMOETZ RIVER WATERSHED**  
**440-000000-**  
**KITNAYAKWA PLANNING AREA**  
**FISHERIES / INTERPRETIVE MAP**  
**SKEENA CELLULOSE INC.**  
**KALUM FOREST DISTRICT**  
**1999**  
**MAPSHEET # 93L031 Map 6 of 9**

Scale 1:20,000  
Contour Interval (20m) Projection UTM

Date: 2000/02/01 (yyyy/mm/dd)

Company: **AW** of **TRITON** Environmental Consultants Ltd.



**STREAM INFORMATION SUMMARY**

**Reach Summary Symbol**  
Fish Code(s)  
CO DV RB  
2 - 12 S2 ( ) Inferred  
Channel Properties  
Channel Width  
Stream Classification

**Lake Summary Symbol**  
Lake (L) or Wetland (W)  
Surface Area  
Maximum Depth  
pH  
Conductivity  
TDS  
Littoral Area  
L - 175 - 8.0 - 6.8 - 29 - 20 - 15  
CSU NFC NSC PCC RSC RB WSU  
Fish Code(s)

**Obstructions**  
Beaver Dam  
Culvert  
Falls  
Persistent Debris Accumulation  
Dam

**Features**  
Eroded Bank  
Alluvial Fan  
Colluvial Fan  
Talus Cone  
Rock Outcrop  
Slumping Bank  
Slump  
Bedrock - confined  
Landslide Debris  
Landslide Area  
Canyon  
Braided Stream  
Wetland / Marsh  
Subsurface Flow  
Tributary  
Devaltered Section  
Side Channel

**Enhancement / Management Activities**  
Fisheries Sensitive Zone

**WSC Information**  
12AB123 Hydrometric station

**Stream Classification**  
Fish Present (Confirmed)  
Fish Present (Inferred)  
Fish Not Present (Confirmed)  
Fish Not Present (Inferred)  
No Visible Channel

**TRIM Base Map Anomalies**  
Field-Identified Stream  
Base Map Discontinuity

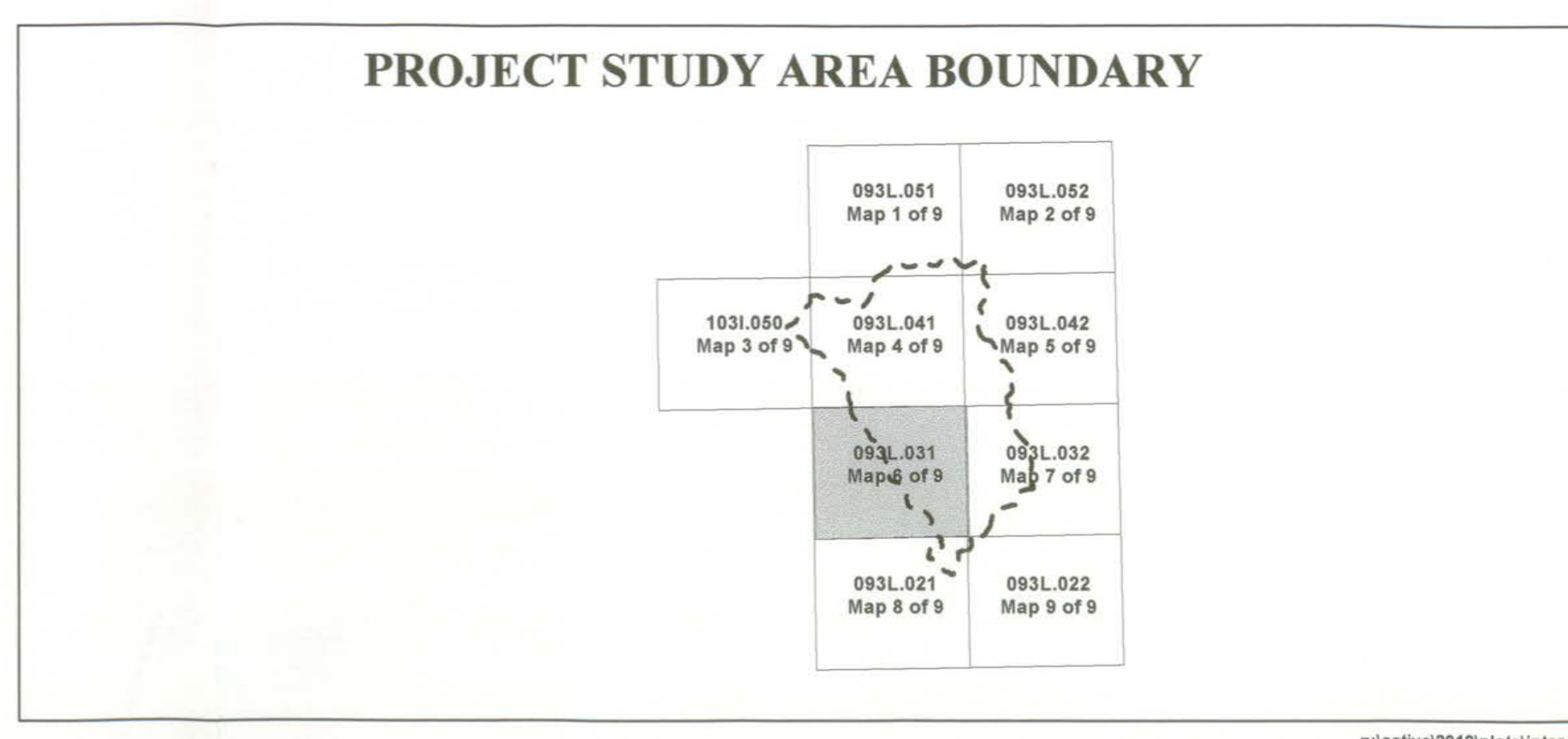
**Base Map Features**  
River / Stream  
River / Stream - intermittent  
River / Stream - indefinite  
Lake  
Lake - intermittent  
Lake - indefinite  
Marsh  
Swamp  
Icefield  
Sand / Gravel Bar  
Island  
Road - loose surface  
Road - rough surface  
Index Contour  
Index Contour - indefinite  
Project Boundary

\* NOTE - Gradients were calculated from TRIM maps during planning Phase 1 2 3 of this project.

**FISH SPECIES**

Present		Historical	
CODE	DESCRIPTION	CODE	DESCRIPTION
NFC	No Fish Caught	Y	End of Fish Use/No Fish Use
NS	Not Sampled	Y	Fish Presence - Salmon
NTU	No Fish Use	Y	Fish Presence - Sport
BT	Bull Trout	Y	Fish Presence - Regionally Significant
CH	Chinook Salmon	Y	Fish Presence - Other
CO	Coho Salmon	Y	Fish Observation - Salmon
CT	Cutthroat Trout	Y	Fish Observation - Sport
DV	Dolly Varden	Y	Fish Obs. - Regionally Significant
RB	Rainbow Trout	Y	Fish Observation - Other
EPU	End of Fish Use	Y	Fish Spawning Limit - Salmon
		Y	Sample Site - No Fish Use

Source: AW/P



"This product has been accepted as being in accordance with approved standards within the limits of Ministry quality assurance procedures. Users are cautioned that interpreted information on this product developed for the purposes of the Forest Practices Code Act and Regulations, for example stream classifications, is subject to review by a statutory decision maker for the purposes of determining whether or not to approve an operational plan."

**INVENTORY SOURCE INFORMATION CODES**

CODE	DESCRIPTION	CODE	DESCRIPTION	CODE	DESCRIPTION	CODE	DESCRIPTION	CODE	DESCRIPTION
BASE	Base Map	LKSYM	Lake Symbol	APP	Airphoto, Planimetric	AP	Aerial Photography	INV	Inventory - Group persons resp. for conducting inventory
TRIM	1:20,000 TRIM Maps	INV	Field Inventory	VIM	Video, Approximate	VID	Video	MELP	Ministry of Environment, Land & Parks
NTS	1:50,000 NTS Maps	SS	Summary	VPC	Video, Corrected	INVD	Detailed Field Inventory	MOF	Ministry of Forests
OTH	Other Map Source	N/A	Not Applicable	OTH	Other	INVO	General Field Inventory	GSC	Geological Survey of Canada
STRSYM	Stream Symbol	OTH	Other	HAB	Habitat Information	INV	Field Inventory	SS	Summary
INV	Field Inventory	LDC	Location Information	INV	Field Inventory	SS	Summary	N/A	Not Applicable
SS	Summary	FDC	Field Estimate	SS	Summary	OTH	Other	DATEINV	Date of Inventory
N/A	Not Applicable	FDC	Field, GPS	N/A	Not Applicable	OTH	Other		
OTH	Other	APF	Airphoto, Estimate	OTH	Other				

**FOREST PRACTICES CODE RIPARIAN CLASSES (STREAM CLASSIFICATION)**

Riparian Class	Average Channel Width (m)	Reserve Zone Width (m)	Management Zone Width (m)	Total RMA Width (m)
S1 - Large Rivers	> 100	0	100	100
S2	> 20	50	20	70
S3	> 5 < 20	30	20	50
S4	< 5	0	30	30
S5	< 3	0	30	30
S6	< 3	0	20	20

**BASE MAP INFORMATION**

Projection: UTM

Datum: NAD83

UTM Zone: 9

**INVENTORY SOURCE INFORMATION**

BASE: TRIM STRSYM: INV

LOC: FDE LKSYM: INV

HAB: INV FISH: INVD

DATE INV: 1999/09/01 INV MGMT: OTH